

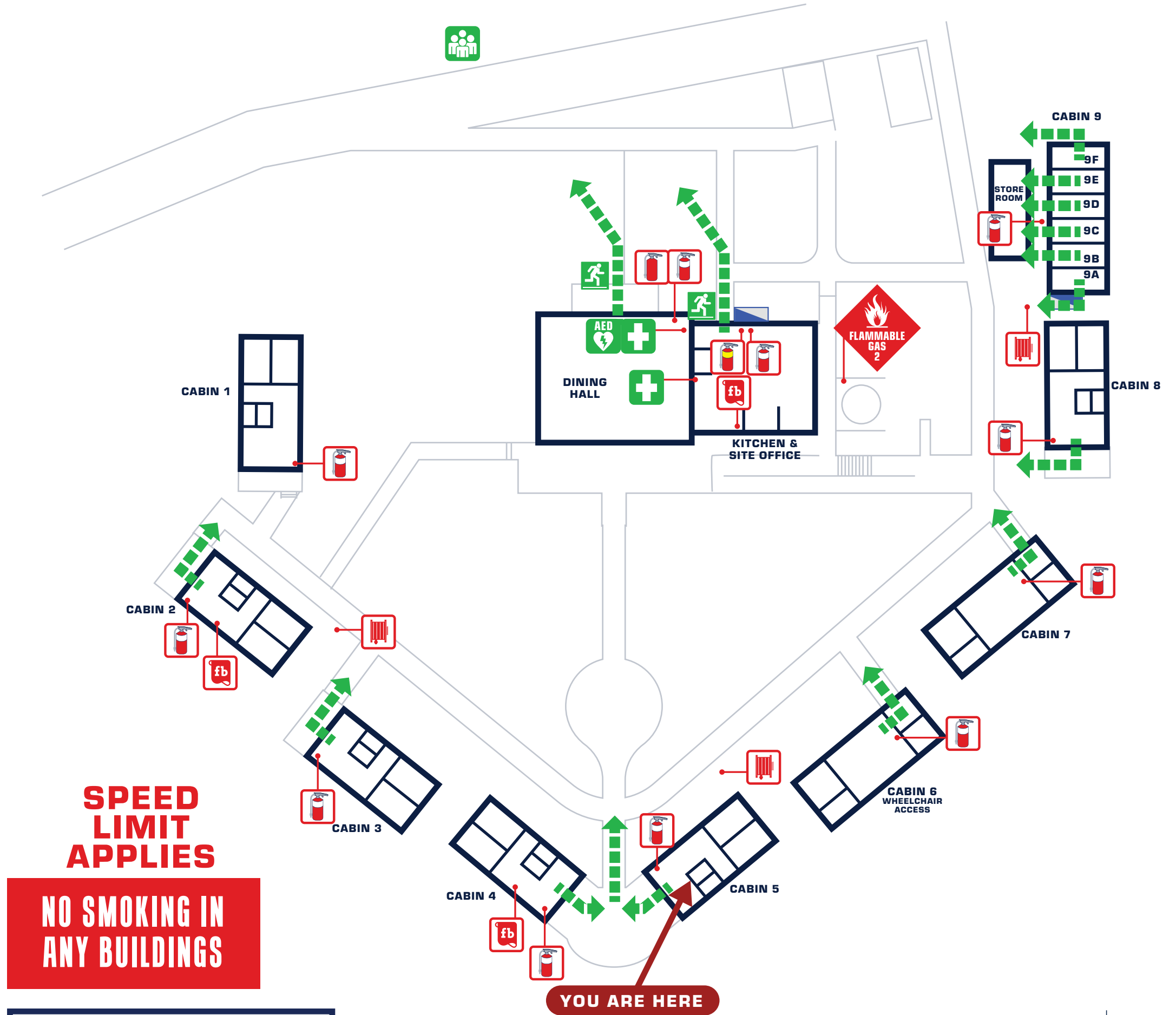
EVACUATION DIAGRAM

CAMP COTTERMOUTH - 1435 COTTER ROAD, STROMLO ACT 2611

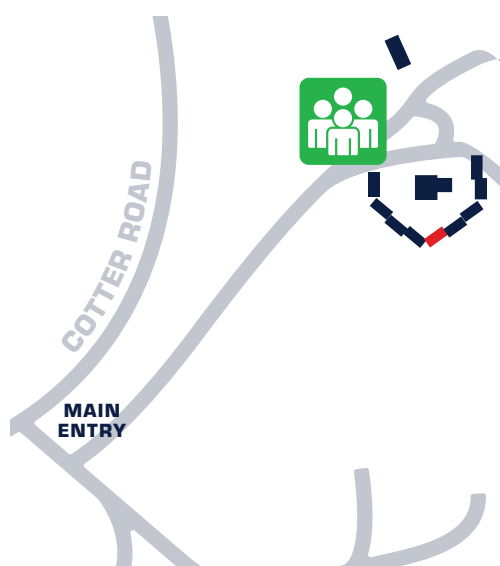
NEAREST CROSS ROAD: PICNIC LANE , CASUARINA SANDS

LATITUDE: -35.33168 S LONGITUDE: 148.96168 E

FireDirect
www.fire-direct.com.au



SITE MAP / ASSEMBLY AREA



EMERGENCY PROCEDURES

- R** REMOVE people from the danger area. Safety to self, scene and survivors.
- A** ALERT all occupants and ensure an alarm has been raised.
TO RAISE AN ALARM CONTACT CAMP MANAGERS
- C** CONFINE the Smoke and Fire. Keep doors and windows closed to restrict the spread of the fire. Attempt to EXTINGUISH the fire if trained and is safe to do so.
- E** EVACUATE the building on the first sign of smoke and fire.



LEGEND

- FIRE EXTINGUISHER DCP
- FIRE EXTINGUISHER WETCHEM
- FIRE EXTINGUISHER WATER
- FIRE HOSE REEL
- FIRE BLANKET
- ELECTRICAL PANEL
- AUTOMATED DEFIBRILLATOR
- FIRST AID KIT
- ASSEMBLY AREA
- EGRESS ROUTE

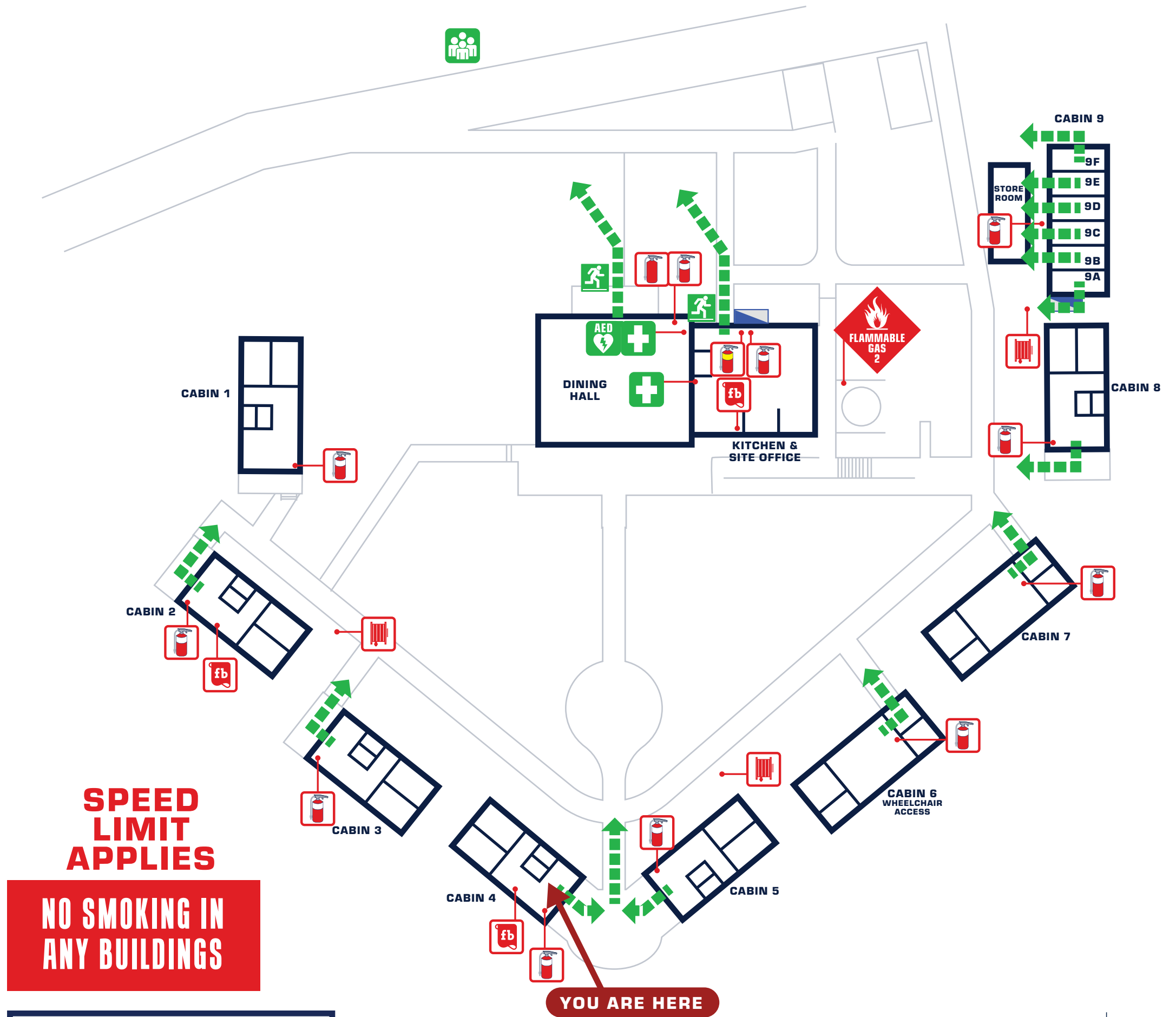
EVACUATION DIAGRAM

CAMP COTTERMOUTH - 1435 COTTER ROAD, STROMLO ACT 2611

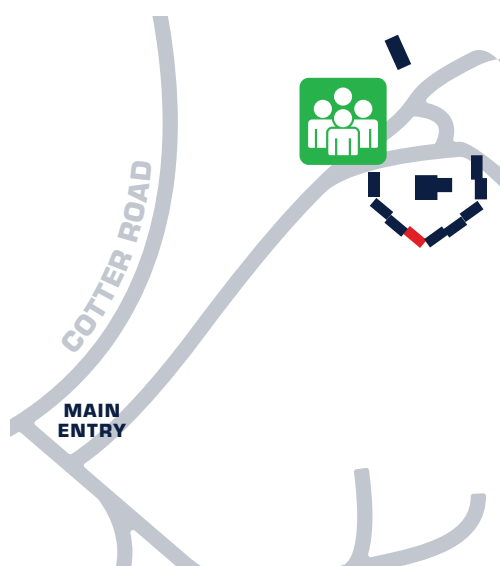
NEAREST CROSS ROAD: PICNIC LANE , CASUARINA SANDS

LATITUDE: -35.33168 S LONGITUDE: 148.96168 E

FireDirect
www.fire-direct.com.au



SITE MAP / ASSEMBLY AREA



EMERGENCY PROCEDURES

- R** REMOVE people from the danger area. Safety to self, scene and survivors.
- A** ALERT all occupants and ensure an alarm has been raised.
TO RAISE AN ALARM CONTACT CAMP MANAGERS
- C** CONFINE the Smoke and Fire. Keep doors and windows closed to restrict the spread of the fire. Attempt to EXTINGUISH the fire if trained and is safe to do so.
- E** EVACUATE the building on the first sign of smoke and fire.



LEGEND

- FIRE EXTINGUISHER DCP
- FIRE EXTINGUISHER WETCHEM
- FIRE EXTINGUISHER WATER
- FIRE HOSE REEL
- FIRE BLANKET
- ELECTRICAL PANEL
- AUTOMATED DEFIBRILLATOR
- FIRST AID KIT
- ASSEMBLY AREA
- EGRESS ROUTE

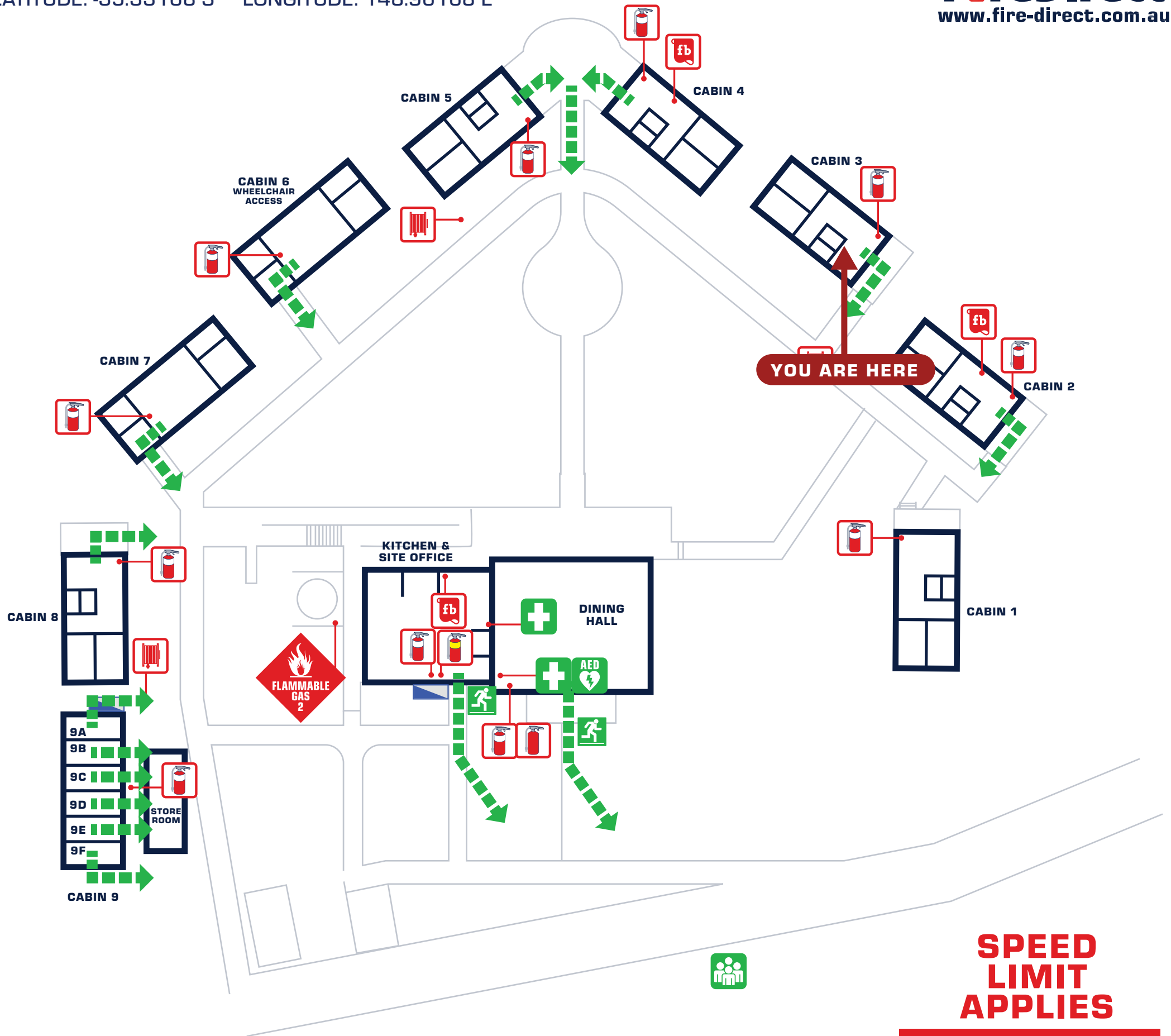
EVACUATION DIAGRAM

CAMP COTTERMOUTH - 1435 COTTER ROAD, STROMLO ACT 2611

NEAREST CROSS ROAD: PICNIC LANE , CASUARINA SANDS

LATITUDE: -35.33168 S LONGITUDE: 148.96168 E

FireDirect
www.fire-direct.com.au



SITE MAP / ASSEMBLY AREA



EMERGENCY PROCEDURES

- R** REMOVE people from the danger area. Safety to self, scene and survivors.
- A** ALERT all occupants and ensure an alarm has been raised.
TO RAISE AN ALARM CONTACT CAMP MANAGERS
- C** CONFINE the Smoke and Fire. Keep doors and windows closed to restrict the spread of the fire. Attempt to EXTINGUISH the fire if trained and is safe to do so.
- E** EVACUATE the building on the first sign of smoke and fire.



LEGEND

- FIRE EXTINGUISHER DCP
- FIRE EXTINGUISHER WETCHEM
- FIRE EXTINGUISHER WATER
- FIRE HOSE REEL
- FIRE BLANKET
- ELECTRICAL PANEL
- AUTOMATED DEFIBRILLATOR
- FIRST AID KIT
- ASSEMBLY AREA
- EGRESS ROUTE

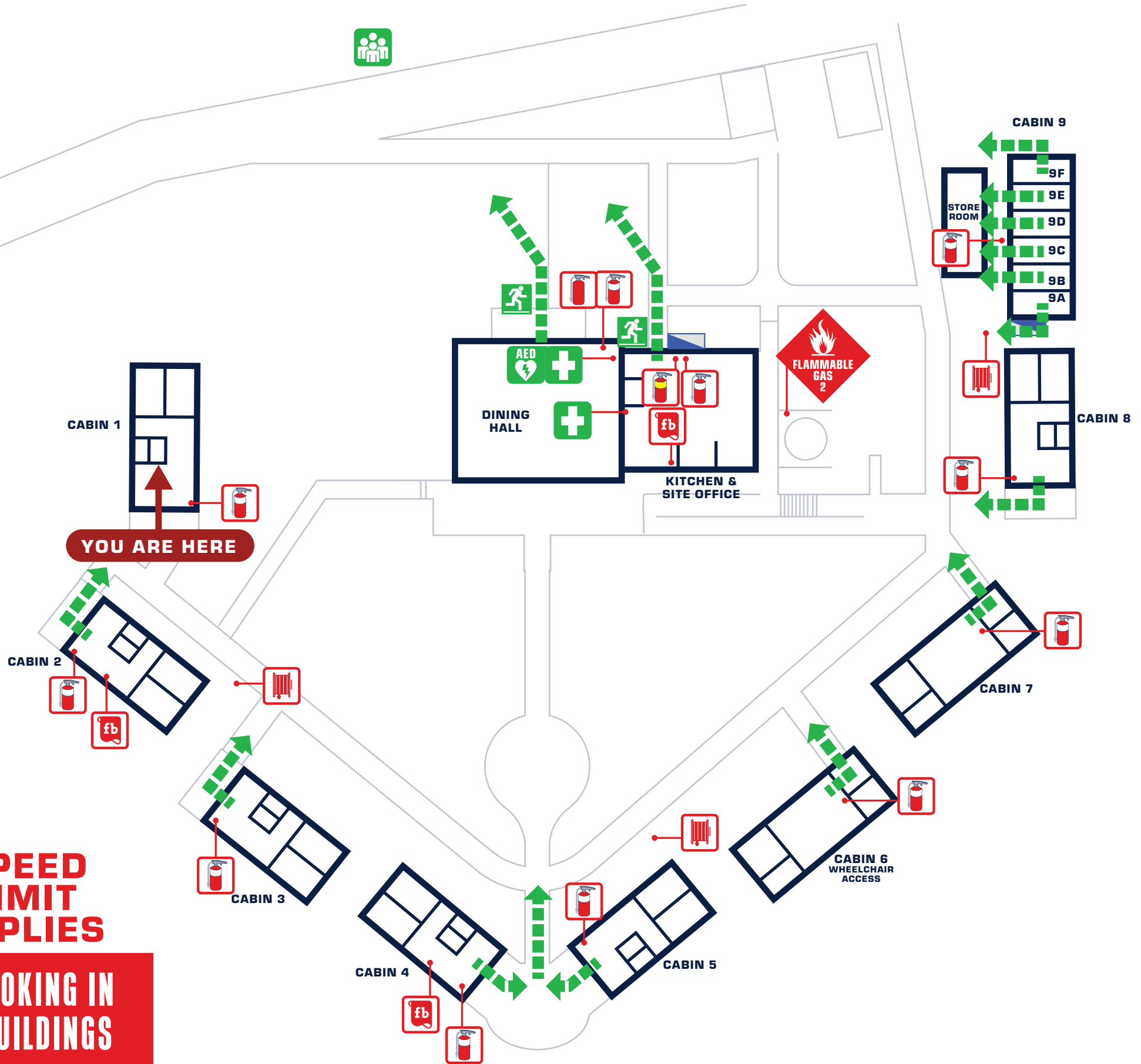
EVACUATION DIAGRAM

CAMP COTTERMOUTH - 1435 COTTER ROAD, STROMLO ACT 2611

NEAREST CROSS ROAD: PICNIC LANE , CASUARINA SANDS

LATITUDE: -35.33168 S LONGITUDE: 148.96168 E

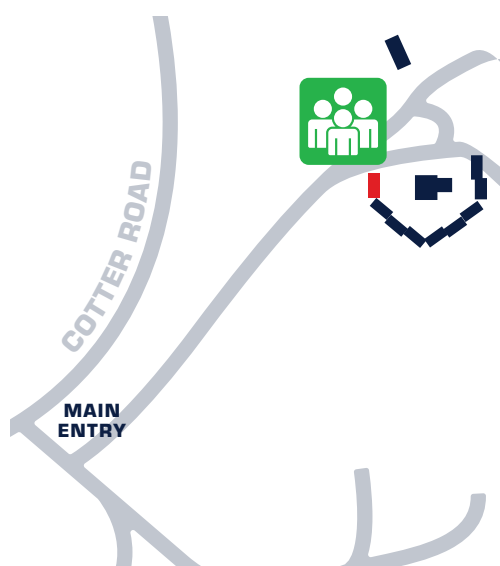
FireDirect
www.fire-direct.com.au



**SPEED
LIMIT
APPLIES**

**NO SMOKING IN
ANY BUILDINGS**

SITE MAP / ASSEMBLY AREA



EMERGENCY PROCEDURES

- R** REMOVE people from the danger area. Safety to self, scene and survivors.
- A** ALERT all occupants and ensure an alarm has been raised.
TO RAISE AN ALARM CONTACT CAMP MANAGERS
- C** CONFINE the Smoke and Fire. Keep doors and windows closed to restrict the spread of the fire. Attempt to EXTINGUISH the fire if trained and is safe to do so.
- E** EVACUATE the building on the first sign of smoke and fire.



LEGEND

- FIRE EXTINGUISHER DCP
- FIRE EXTINGUISHER WETCHEM
- FIRE EXTINGUISHER WATER
- FIRE HOSE REEL
- FIRE BLANKET
- ELECTRICAL PANEL
- AUTOMATED DEFIBRILLATOR
- FIRST AID KIT
- ASSEMBLY AREA
- EGRESS ROUTE

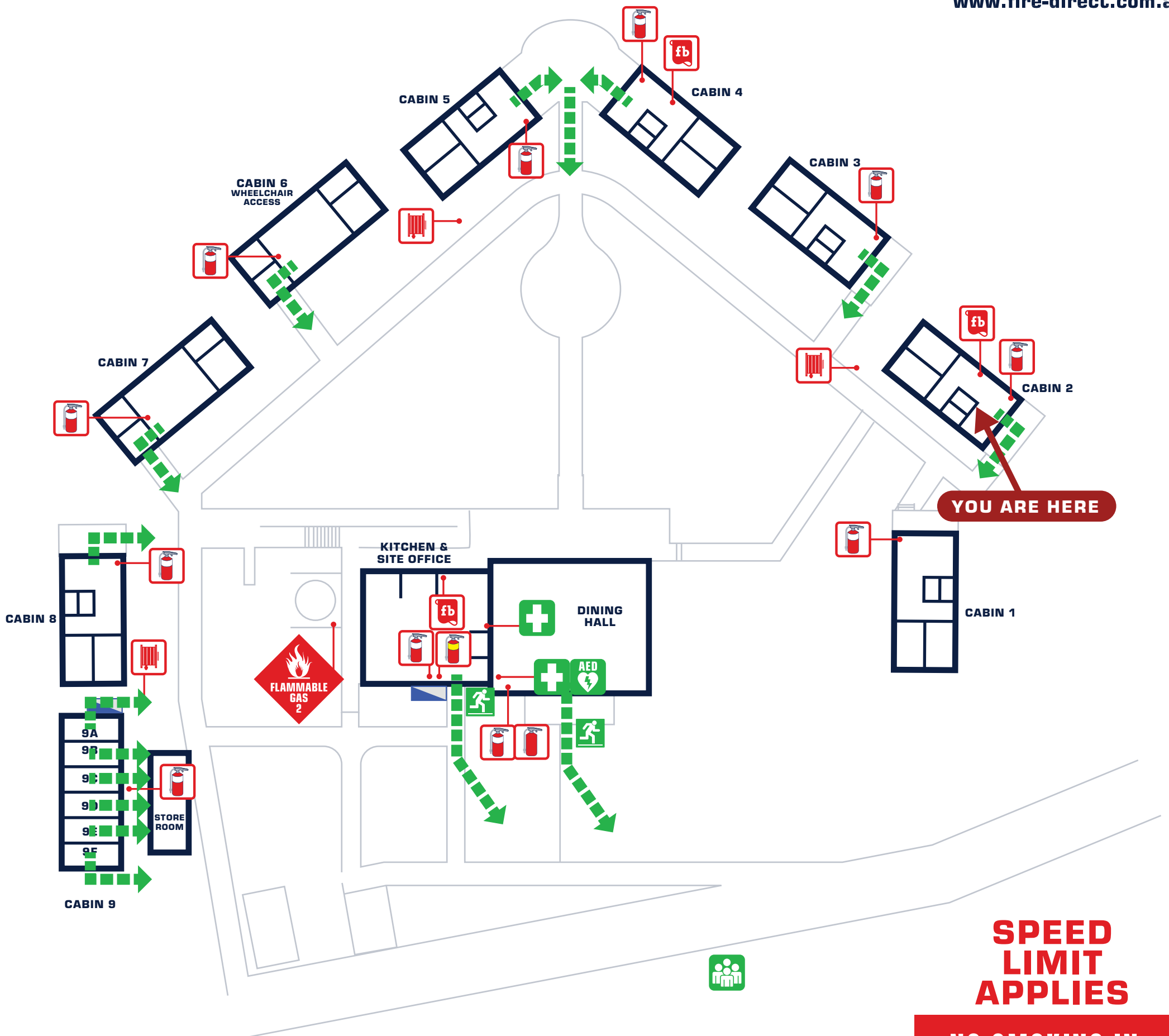
EVACUATION DIAGRAM

CAMP COTTERMOUTH - 1435 COTTER ROAD, STROMLO ACT 2611

NEAREST CROSS ROAD: PICNIC LANE , CASUARINA SANDS

LATITUDE: -35.33168 S LONGITUDE: 148.96168 E

FireDirect
www.fire-direct.com.au



SITE MAP / ASSEMBLY AREA



EMERGENCY PROCEDURES

- R** REMOVE people from the danger area. Safety to self, scene and survivors.
- A** ALERT all occupants and ensure an alarm has been raised.
TO RAISE AN ALARM CONTACT CAMP MANAGERS
- C** CONFINE the Smoke and Fire. Keep doors and windows closed to restrict the spread of the fire. Attempt to EXTINGUISH the fire if trained and is safe to do so.
- E** EVACUATE the building on the first sign of smoke and fire.



LEGEND

- FIRE EXTINGUISHER DCP
- FIRE EXTINGUISHER WETCHEM
- FIRE EXTINGUISHER WATER
- FIRE HOSE REEL
- FIRE BLANKET
- ELECTRICAL PANEL
- AUTOMATED DEFIBRILLATOR
- FIRST AID KIT
- ASSEMBLY AREA
- EGRESS ROUTE

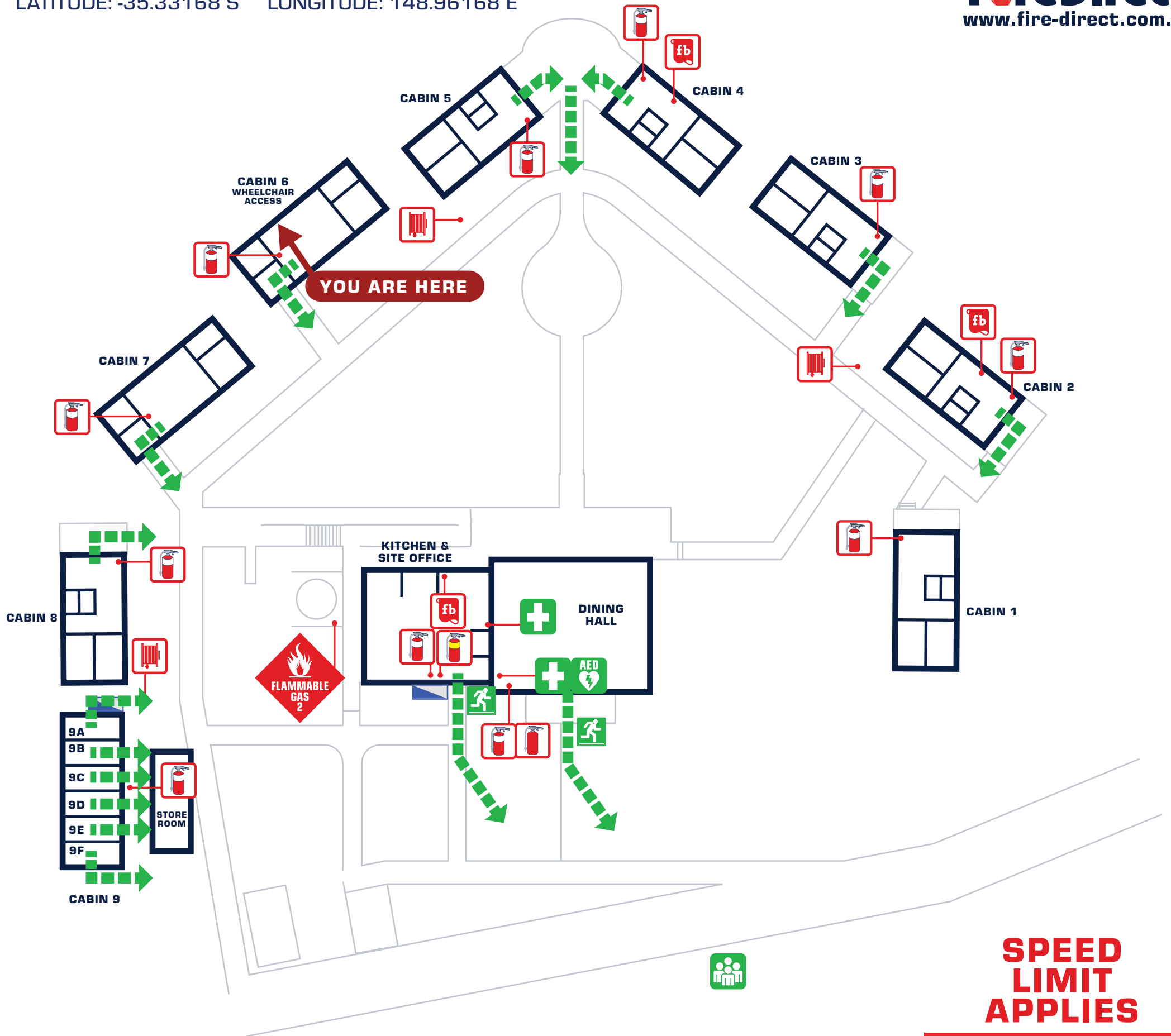
EVACUATION DIAGRAM

CAMP COTTERMOUTH - 1435 COTTER ROAD, STROMLO ACT 2611

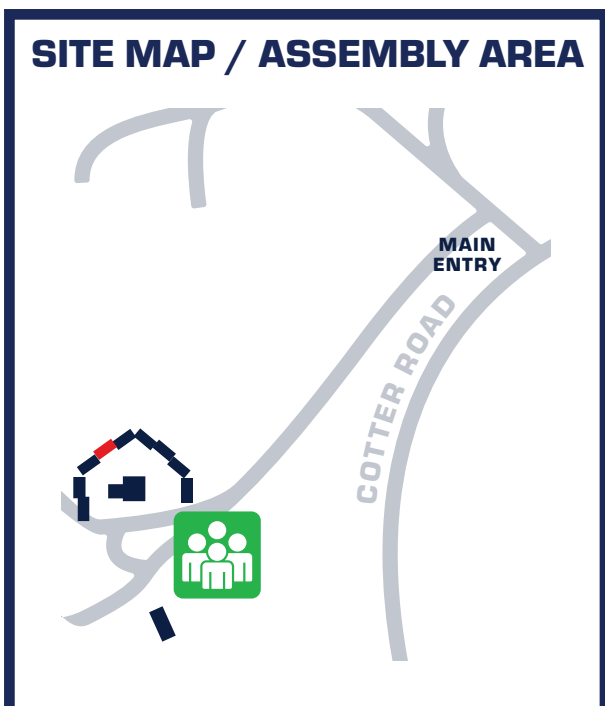
NEAREST CROSS ROAD: PICNIC LANE , CASUARINA SANDS

LATITUDE: -35.33168 S LONGITUDE: 148.96168 E

FireDirect
www.fire-direct.com.au



SITE MAP / ASSEMBLY AREA



EMERGENCY PROCEDURES

- R** REMOVE people from the danger area. Safety to self, scene and survivors.
- A** ALERT all occupants and ensure an alarm has been raised.
TO RAISE AN ALARM CONTACT CAMP MANAGERS
- C** CONFINE the Smoke and Fire. Keep doors and windows closed to restrict the spread of the fire. Attempt to EXTINGUISH the fire if trained and is safe to do so.
- E** EVACUATE the building on the first sign of smoke and fire.



LEGEND

- FIRE EXTINGUISHER DCP
- FIRE EXTINGUISHER WETCHEM
- FIRE EXTINGUISHER WATER
- FIRE HOSE REEL
- FIRE BLANKET
- ELECTRICAL PANEL
- AUTOMATED DEFIBRILLATOR
- FIRST AID KIT
- ASSEMBLY AREA
- EGRESS ROUTE

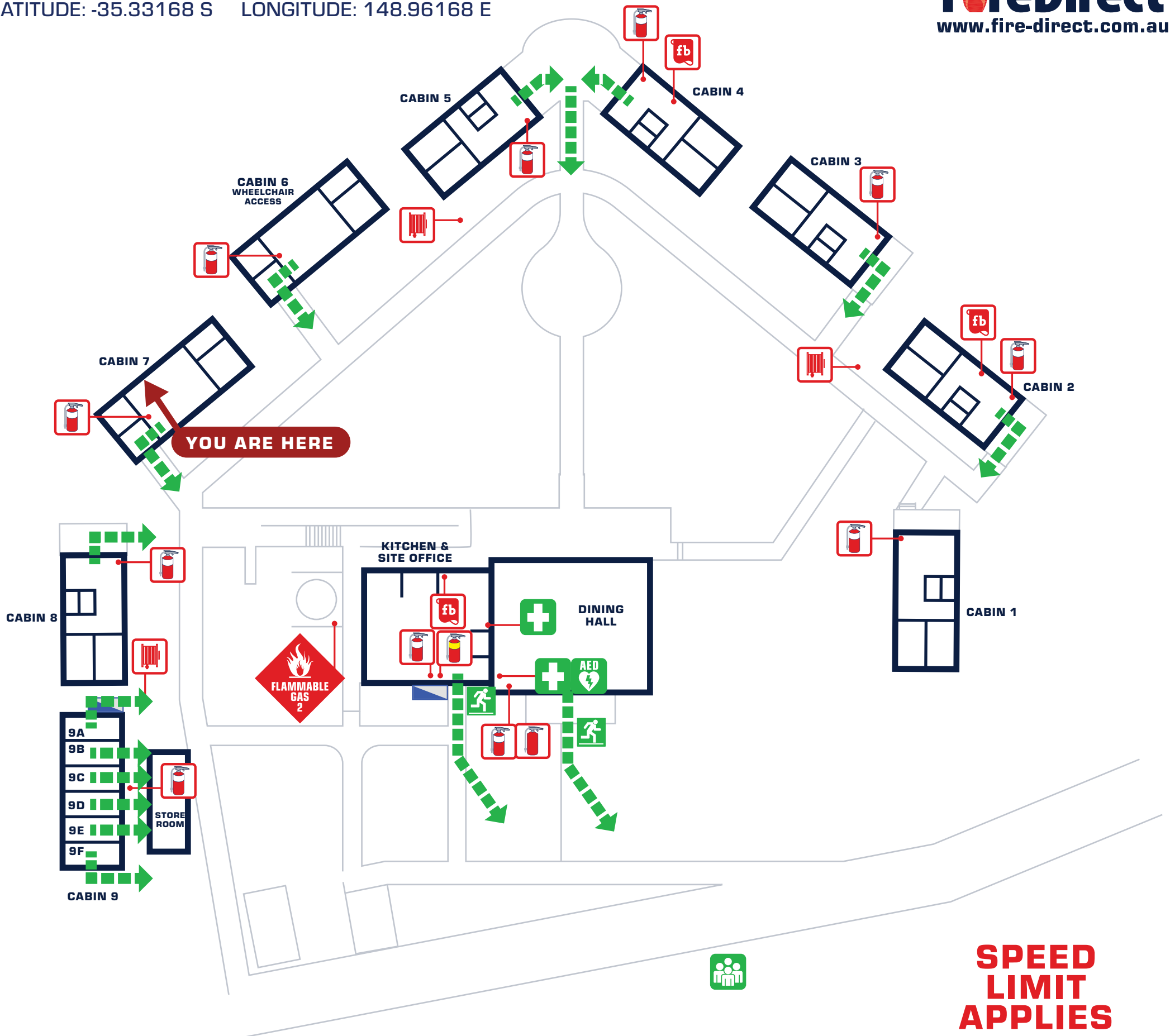
EVACUATION DIAGRAM

CAMP COTTERMOUTH - 1435 COTTER ROAD, STROMLO ACT 2611

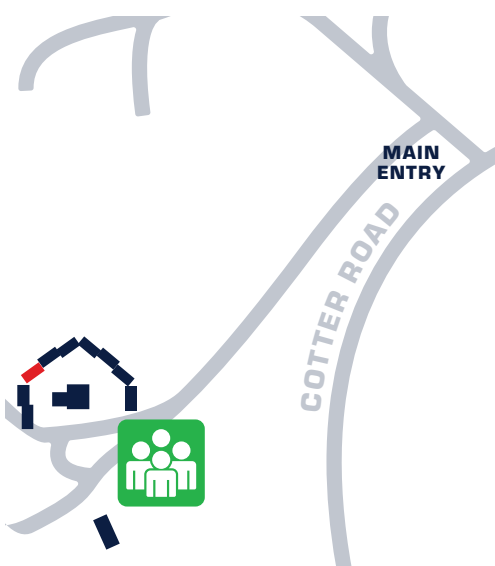
NEAREST CROSS ROAD: PICNIC LANE , CASUARINA SANDS

LATITUDE: -35.33168 S LONGITUDE: 148.96168 E

FireDirect
www.fire-direct.com.au



SITE MAP / ASSEMBLY AREA



EMERGENCY PROCEDURES

- R** REMOVE people from the danger area. Safety to self, scene and survivors.
- A** ALERT all occupants and ensure an alarm has been raised.
TO RAISE AN ALARM CONTACT CAMP MANAGERS
- C** CONFINE the Smoke and Fire. Keep doors and windows closed to restrict the spread of the fire. Attempt to EXTINGUISH the fire if trained and is safe to do so.
- E** EVACUATE the building on the first sign of smoke and fire.



LEGEND

- FIRE EXTINGUISHER DCP
- FIRE EXTINGUISHER WETCHEM
- FIRE EXTINGUISHER WATER
- FIRE HOSE REEL
- FIRE BLANKET
- ELECTRICAL PANEL
- AUTOMATED DEFIBRILLATOR
- FIRST AID KIT
- ASSEMBLY AREA
- EGRESS ROUTE

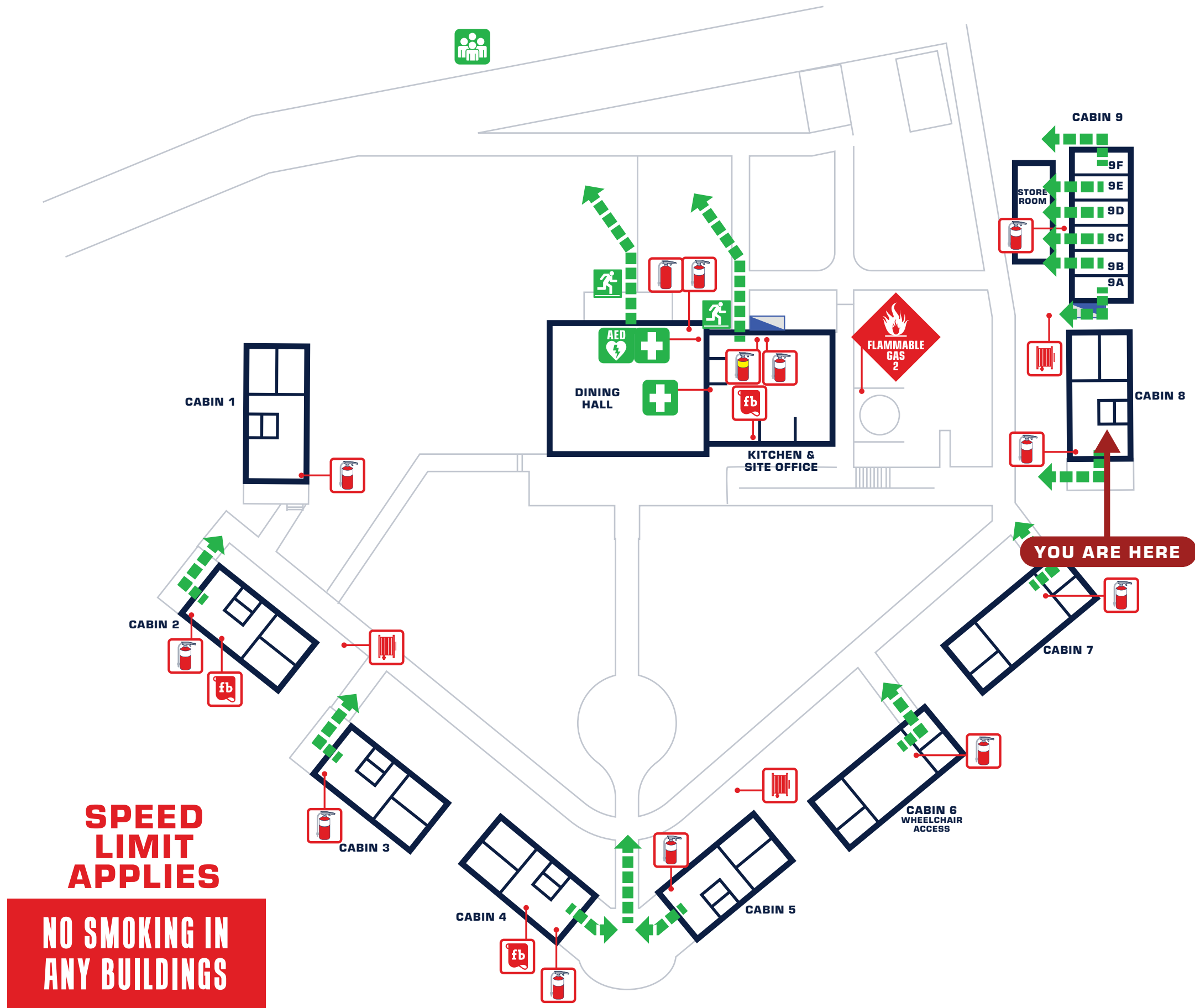
EVACUATION DIAGRAM

CAMP COTTERMOUTH - 1435 COTTER ROAD, STROMLO ACT 2611

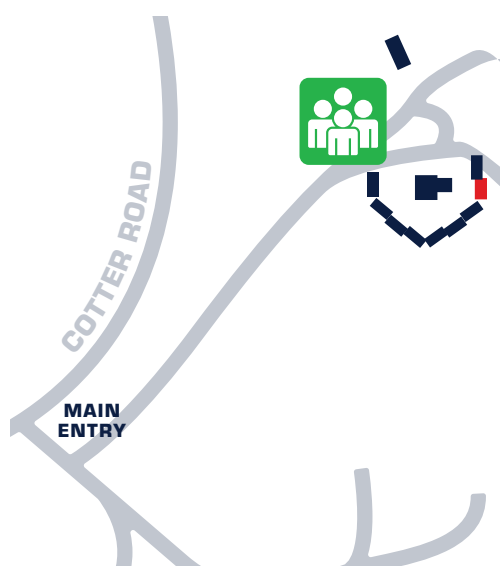
NEAREST CROSS ROAD: PICNIC LANE , CASUARINA SANDS

LATITUDE: -35.33168 S LONGITUDE: 148.96168 E

FireDirect
www.fire-direct.com.au



SITE MAP / ASSEMBLY AREA



EMERGENCY PROCEDURES

- R** REMOVE people from the danger area. Safety to self, scene and survivors.
- A** ALERT all occupants and ensure an alarm has been raised.
TO RAISE AN ALARM CONTACT CAMP MANAGERS
- C** CONFINE the Smoke and Fire. Keep doors and windows closed to restrict the spread of the fire. Attempt to EXTINGUISH the fire if trained and is safe to do so.
- E** EVACUATE the building on the first sign of smoke and fire.



LEGEND

- FIRE EXTINGUISHER DCP
- FIRE EXTINGUISHER WETCHEM
- FIRE EXTINGUISHER WATER
- FIRE HOSE REEL
- FIRE BLANKET
- ELECTRICAL PANEL
- AUTOMATED DEFIBRILLATOR
- FIRST AID KIT
- ASSEMBLY AREA
- EGRESS ROUTE

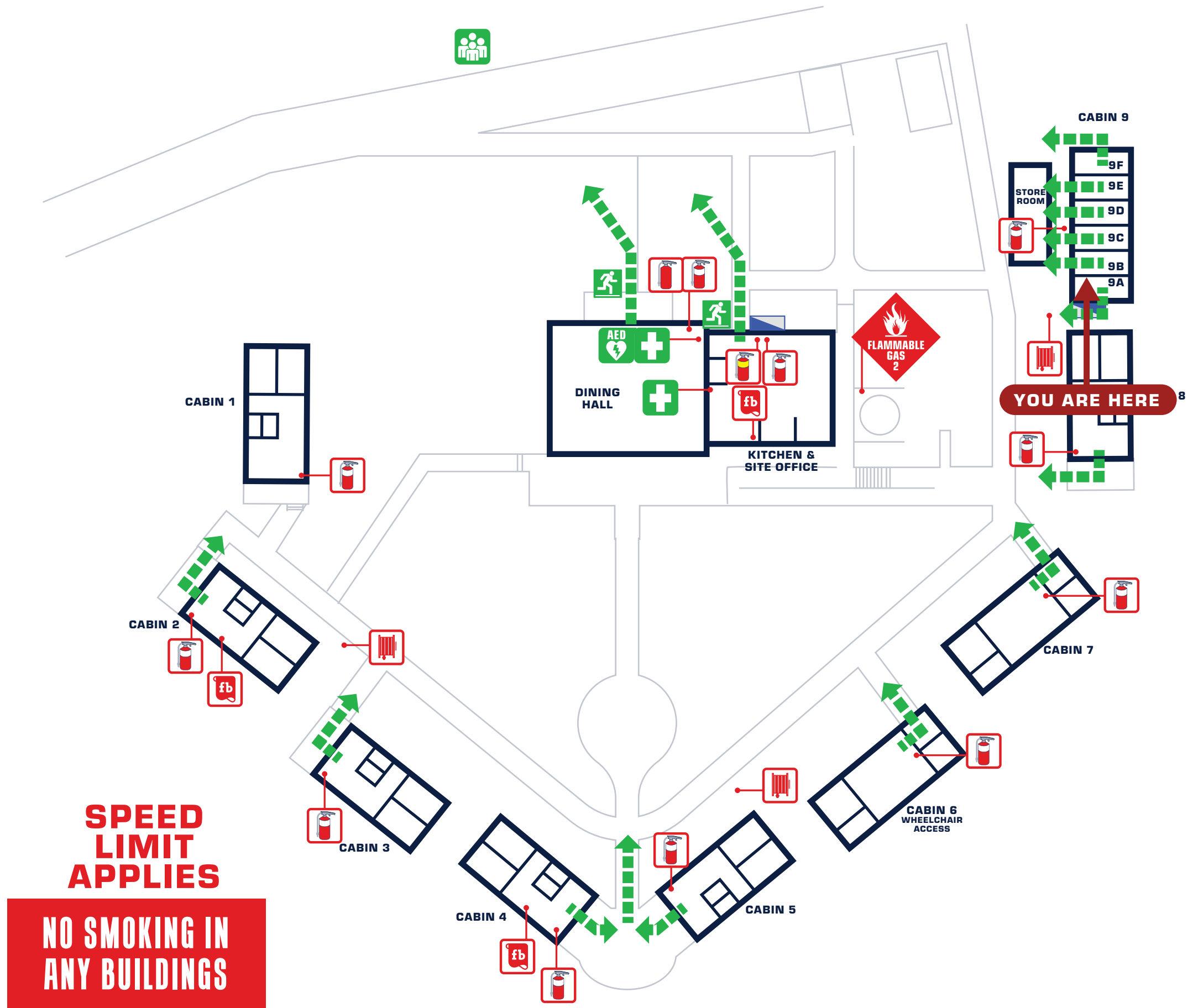
EVACUATION DIAGRAM

CAMP COTTERMOUTH - 1435 COTTER ROAD, STROMLO ACT 2611

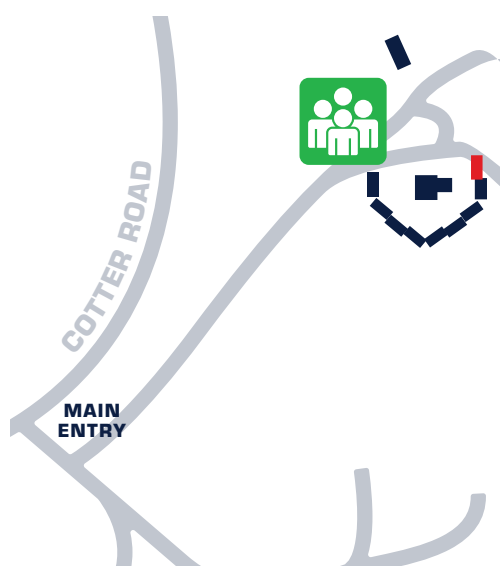
NEAREST CROSS ROAD: PICNIC LANE , CASUARINA SANDS

LATITUDE: -35.33168 S LONGITUDE: 148.96168 E

FireDirect
www.fire-direct.com.au



SITE MAP / ASSEMBLY AREA



EMERGENCY PROCEDURES

- R** REMOVE people from the danger area. Safety to self, scene and survivors.
- A** ALERT all occupants and ensure an alarm has been raised.
TO RAISE AN ALARM CONTACT CAMP MANAGERS
- C** CONFINE the Smoke and Fire. Keep doors and windows closed to restrict the spread of the fire. Attempt to EXTINGUISH the fire if trained and is safe to do so.
- E** EVACUATE the building on the first sign of smoke and fire.



LEGEND

- FIRE EXTINGUISHER DCP
- FIRE EXTINGUISHER WETCHEM
- FIRE EXTINGUISHER WATER
- FIRE HOSE REEL
- FIRE BLANKET
- ELECTRICAL PANEL
- AUTOMATED DEFIBRILLATOR
- FIRST AID KIT
- ASSEMBLY AREA
- EGRESS ROUTE

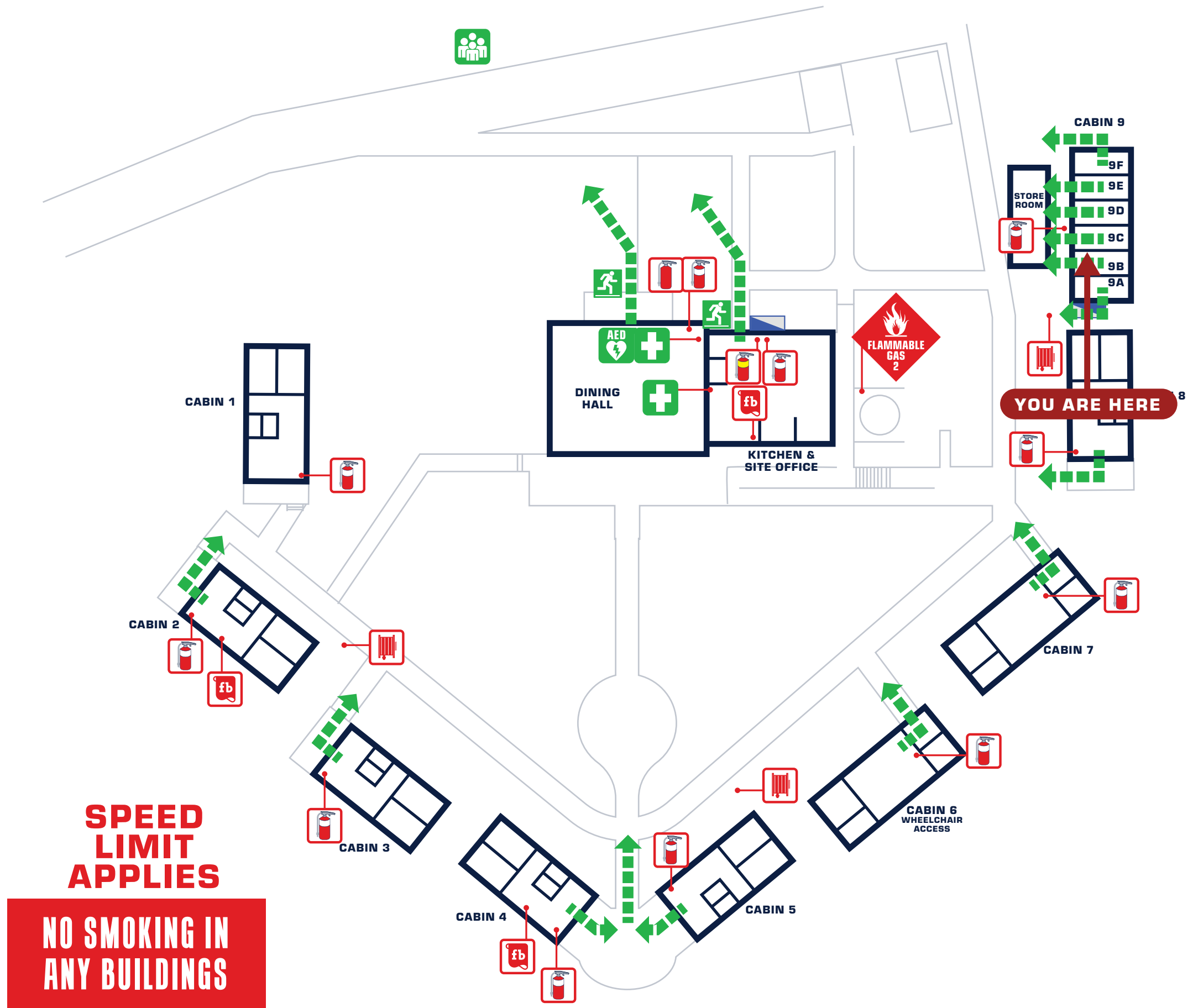
EVACUATION DIAGRAM

CAMP COTTERMOUTH - 1435 COTTER ROAD, STROMLO ACT 2611

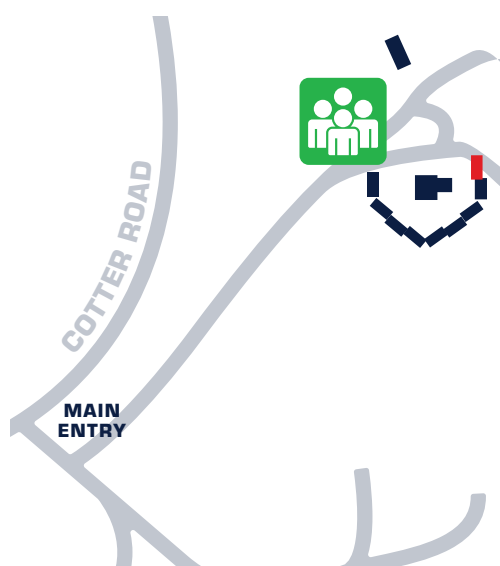
NEAREST CROSS ROAD: PICNIC LANE , CASUARINA SANDS

LATITUDE: -35.33168 S LONGITUDE: 148.96168 E

FireDirect
www.fire-direct.com.au



SITE MAP / ASSEMBLY AREA



EMERGENCY PROCEDURES

- R** REMOVE people from the danger area. Safety to self, scene and survivors.
- A** ALERT all occupants and ensure an alarm has been raised.
TO RAISE AN ALARM CONTACT CAMP MANAGERS
- C** CONFINE the Smoke and Fire. Keep doors and windows closed to restrict the spread of the fire. Attempt to EXTINGUISH the fire if trained and is safe to do so.
- E** EVACUATE the building on the first sign of smoke and fire.



LEGEND

- FIRE EXTINGUISHER DCP
- FIRE EXTINGUISHER WETCHEM
- FIRE EXTINGUISHER WATER
- FIRE HOSE REEL
- FIRE BLANKET
- ELECTRICAL PANEL
- AUTOMATED DEFIBRILLATOR
- FIRST AID KIT
- ASSEMBLY AREA
- EGRESS ROUTE

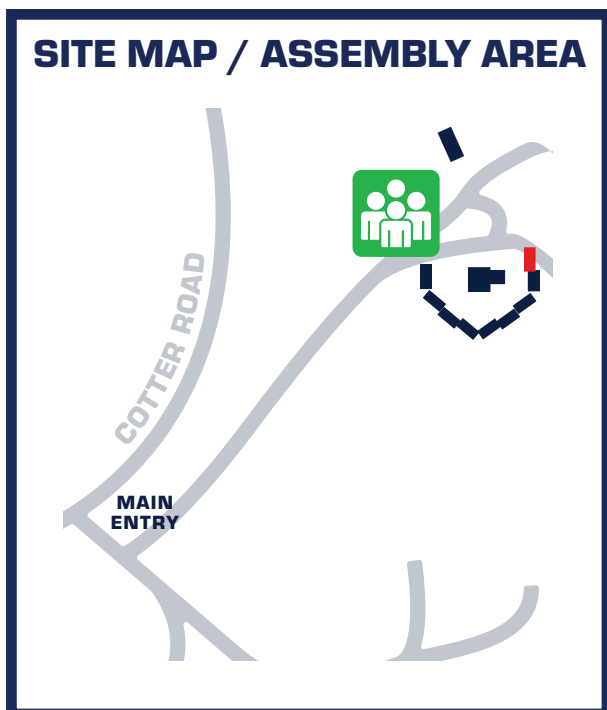
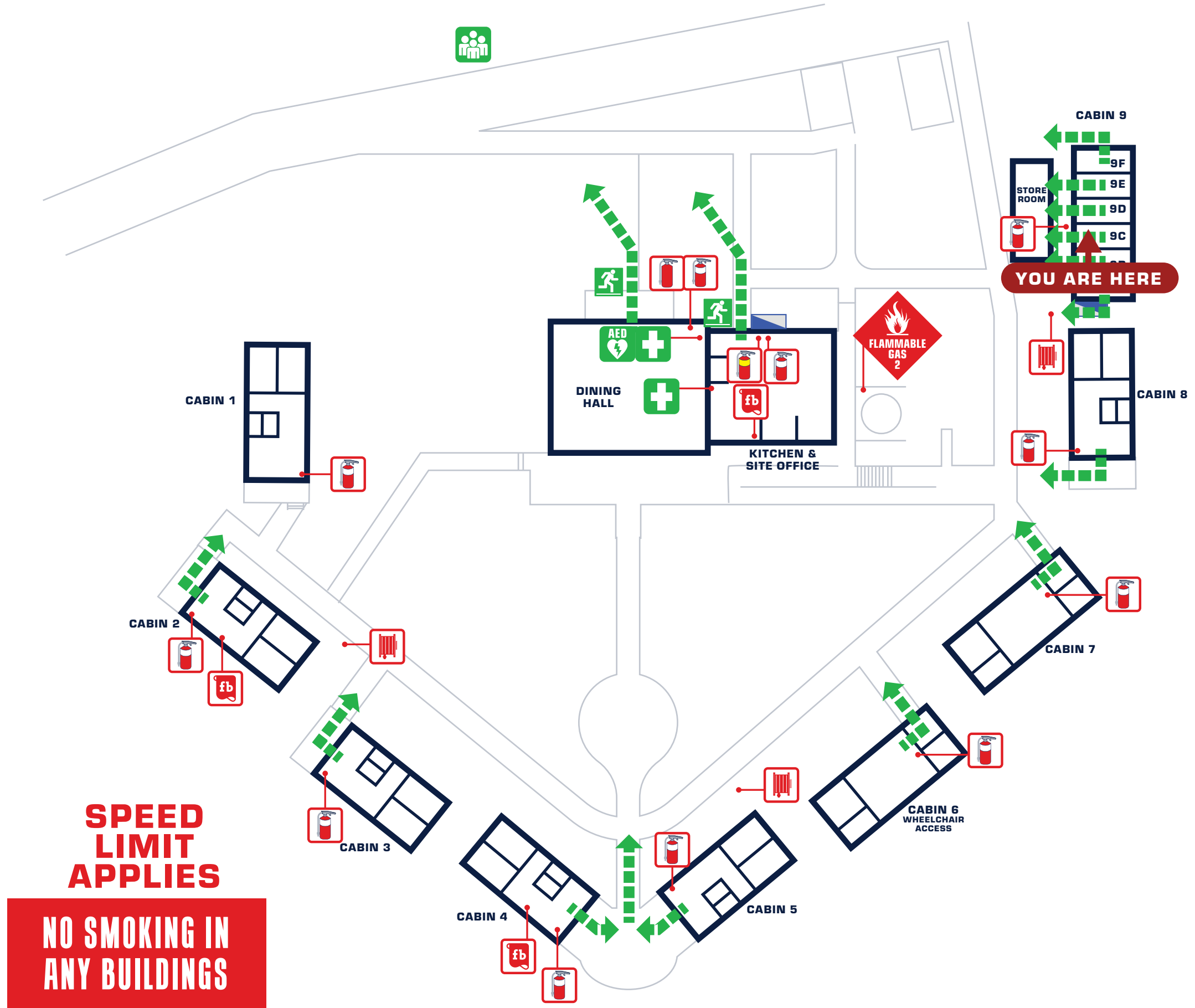
EVACUATION DIAGRAM

CAMP COTTERMOUTH - 1435 COTTER ROAD, STROMLO ACT 2611

NEAREST CROSS ROAD: PICNIC LANE , CASUARINA SANDS

LATITUDE: -35.33168 S LONGITUDE: 148.96168 E

FireDirect
www.fire-direct.com.au



EMERGENCY PROCEDURES

- R** REMOVE people from the danger area. Safety to self, scene and survivors.
- A** ALERT all occupants and ensure an alarm has been raised.
TO RAISE AN ALARM CONTACT CAMP MANAGERS
- C** CONFINE the Smoke and Fire. Keep doors and windows closed to restrict the spread of the fire. Attempt to EXTINGUISH the fire if trained and is safe to do so.
- E** EVACUATE the building on the first sign of smoke and fire.



LEGEND

- FIRE EXTINGUISHER DCP
- FIRE EXTINGUISHER WETCHEM
- FIRE EXTINGUISHER WATER
- FIRE HOSE REEL
- FIRE BLANKET
- ELECTRICAL PANEL
- AUTOMATED DEFIBRILLATOR
- FIRST AID KIT
- ASSEMBLY AREA
- EGRESS ROUTE

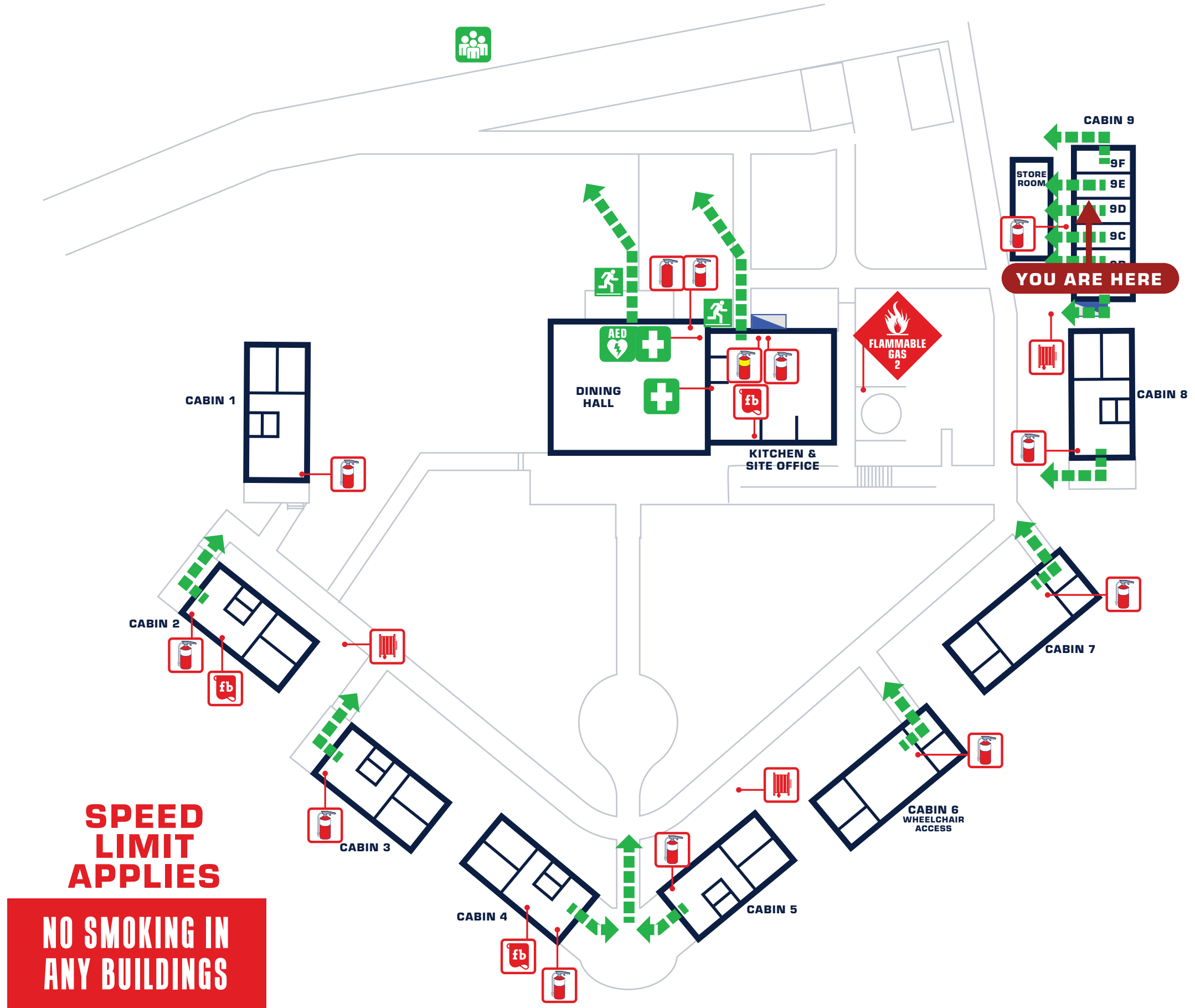
EVACUATION DIAGRAM

CAMP COTTERMOUTH - 1435 COTTER ROAD, STROMLO ACT 2611

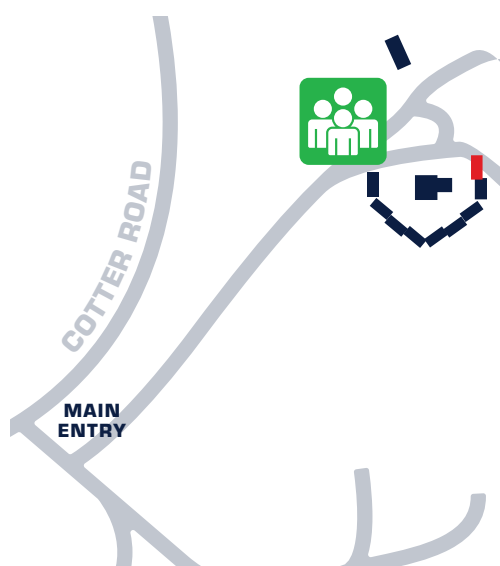
NEAREST CROSS ROAD: PICNIC LANE , CASUARINA SANDS

LATITUDE: -35.33168 S LONGITUDE: 148.96168 E

FireDirect
www.fire-direct.com.au



SITE MAP / ASSEMBLY AREA



EMERGENCY PROCEDURES

- R** REMOVE people from the danger area. Safety to self, scene and survivors.
- A** ALERT all occupants and ensure an alarm has been raised.
TO RAISE AN ALARM CONTACT CAMP MANAGERS
- C** CONFINE the Smoke and Fire. Keep doors and windows closed to restrict the spread of the fire. Attempt to EXTINGUISH the fire if trained and is safe to do so.
- E** EVACUATE the building on the first sign of smoke and fire.



LEGEND

- FIRE EXTINGUISHER DCP
- FIRE EXTINGUISHER WETCHEM
- FIRE EXTINGUISHER WATER
- FIRE HOSE REEL
- FIRE BLANKET
- ELECTRICAL PANEL
- AUTOMATED DEFIBRILLATOR
- FIRST AID KIT
- ASSEMBLY AREA
- EGRESS ROUTE

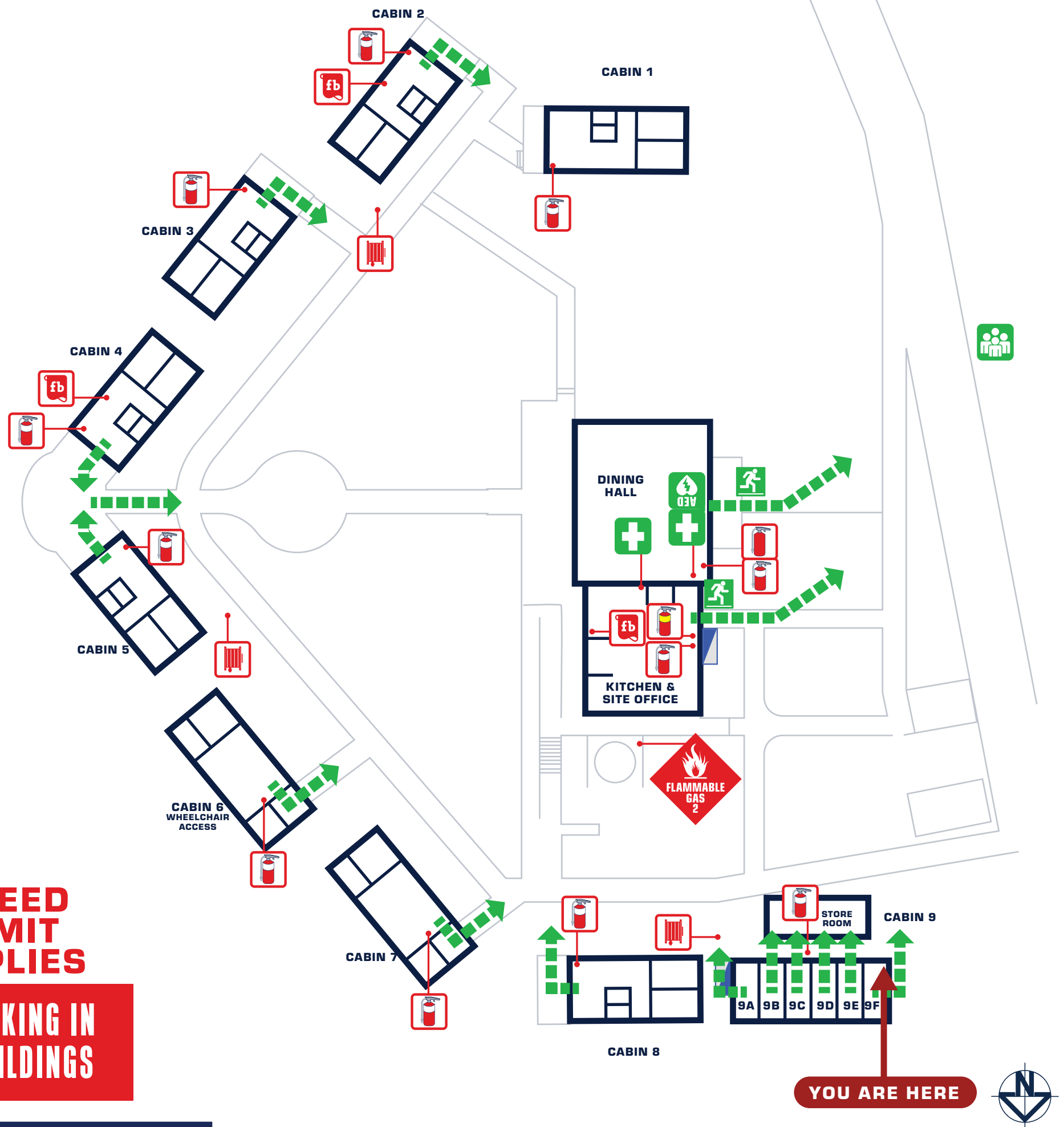
EVACUATION DIAGRAM

CAMP COTTERMOUTH - 1435 COTTER ROAD, STROMLO ACT 2611

NEAREST CROSS ROAD: PICNIC LANE , CASUARINA SANDS

LATITUDE: -35.33168 S LONGITUDE: 148.96168 E

FireDirect
www.fire-direct.com.au



**SPEED
LIMIT
APPLIES**

**NO SMOKING IN
ANY BUILDINGS**

SITE MAP / ASSEMBLY AREA



EMERGENCY PROCEDURES

- R** REMOVE people from the danger area. Safety to self, scene and survivors.
- A** ALERT all occupants and ensure an alarm has been raised.
**TO RAISE AN ALARM
CONTACT CAMP MANAGERS**
- C** CONFINE the Smoke and Fire. Keep doors and windows closed to restrict the spread of the fire. Attempt to EXTINGUISH the fire if trained and is safe to do so.
- E** EVACUATE the building on the first sign of smoke and fire.

**000
EMERGENCY**
ACT EMERGENCY SERVICES

LEGEND

- FIRE EXTINGUISHER DCP
- FIRE EXTINGUISHER WETCHEM
- FIRE EXTINGUISHER WATER
- FIRE HOSE REEL
- FIRE BLANKET
- ELECTRICAL PANEL
- AUTOMATED DEFIBRILLATOR
- FIRST AID KIT
- ASSEMBLY AREA
- EGRESS ROUTE

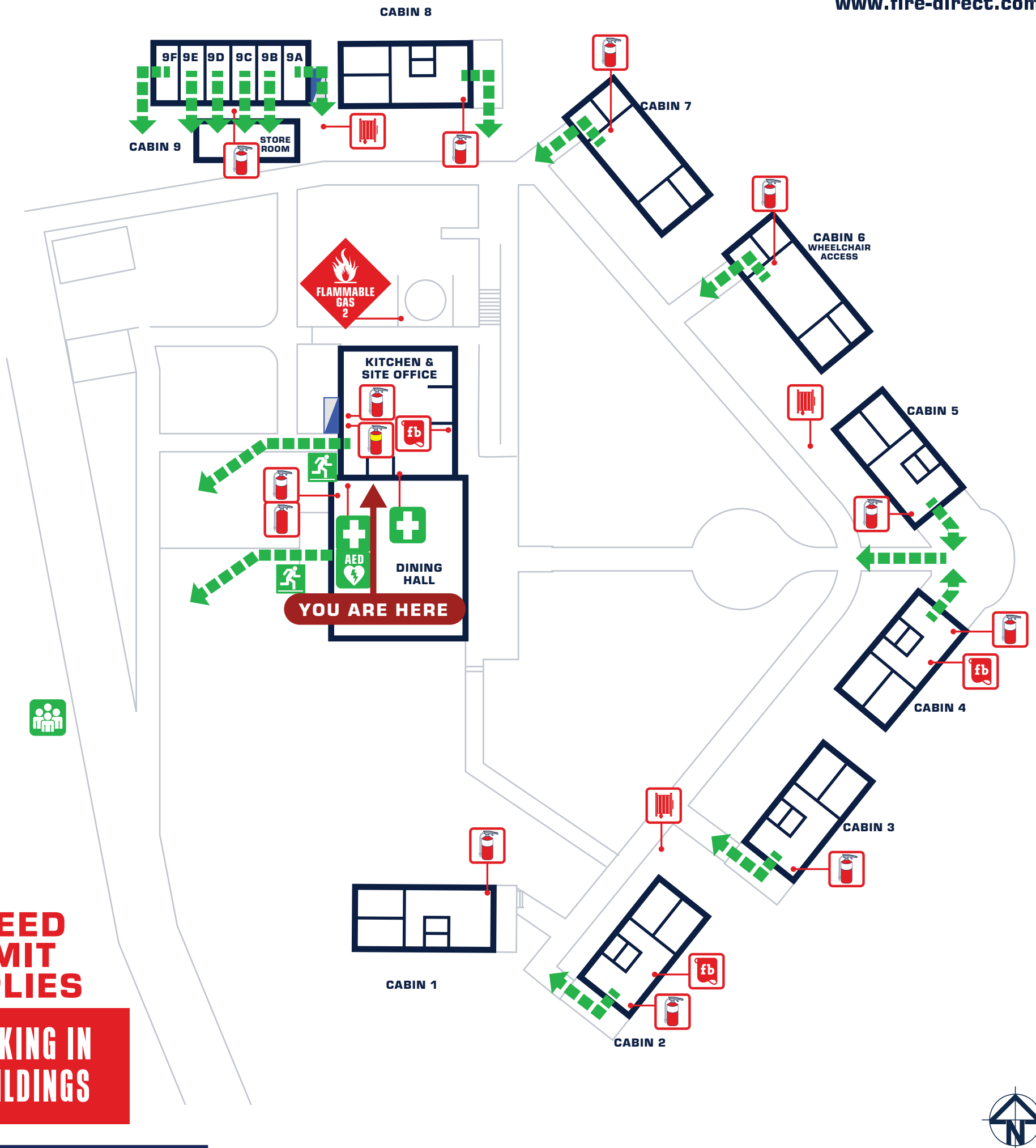
EVACUATION DIAGRAM

CAMP COTTERMOUTH - 1435 COTTER ROAD, STROMLO ACT 2611

NEAREST CROSS ROAD: PICNIC LANE , CASUARINA SANDS

LATITUDE: -35.33168 S LONGITUDE: 148.96168 E

FireDirect
www.fire-direct.com.au



SITE MAP / ASSEMBLY AREA



EMERGENCY PROCEDURES

- R** REMOVE people from the danger area. Safety to self, scene and survivors.
- A** ALERT all occupants and ensure an alarm has been raised.
TO RAISE AN ALARM CONTACT CAMP MANAGERS
- C** CONFINE the Smoke and Fire. Keep doors and windows closed to restrict the spread of the fire. Attempt to EXTINGUISH the fire if trained and is safe to do so.
- E** EVACUATE the building on the first sign of smoke and fire.



LEGEND

- FIRE EXTINGUISHER DCP
- FIRE EXTINGUISHER WETCHEM
- FIRE EXTINGUISHER WATER
- FIRE HOSE REEL
- FIRE BLANKET
- ELECTRICAL PANEL
- AUTOMATED DEFIBRILLATOR
- FIRST AID KIT
- ASSEMBLY AREA
- EGRESS ROUTE